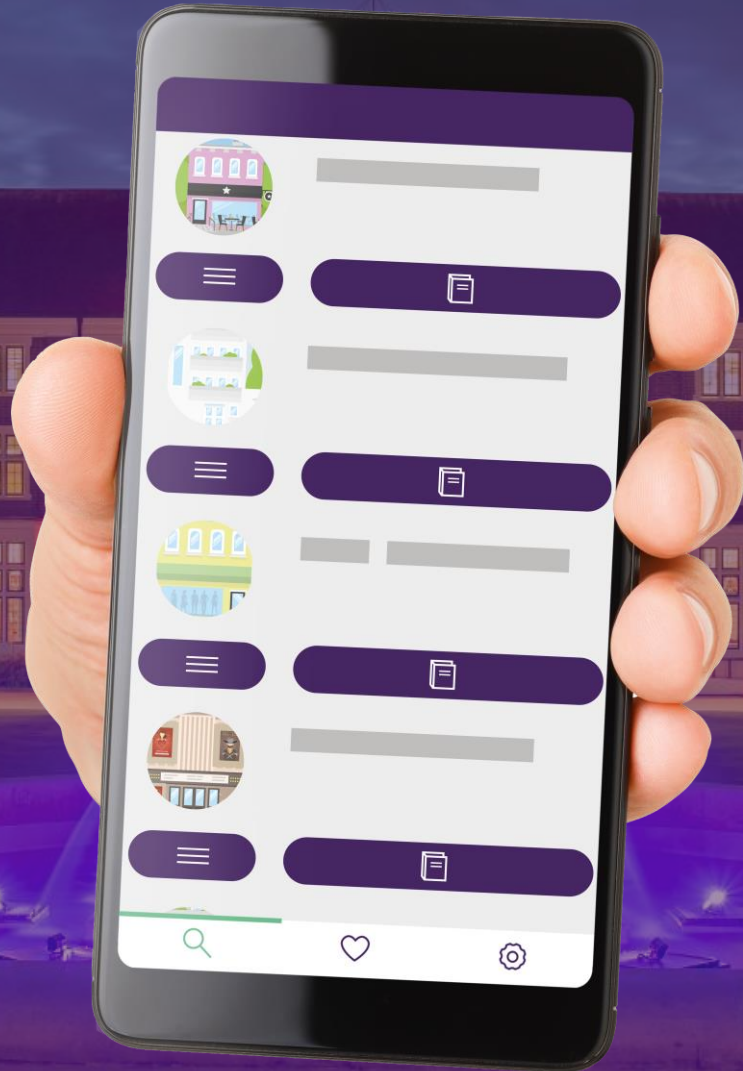




AccessAble

Your Accessibility Guide



A simple idea born from lived experience



**May
2000**



**Sept
2001**



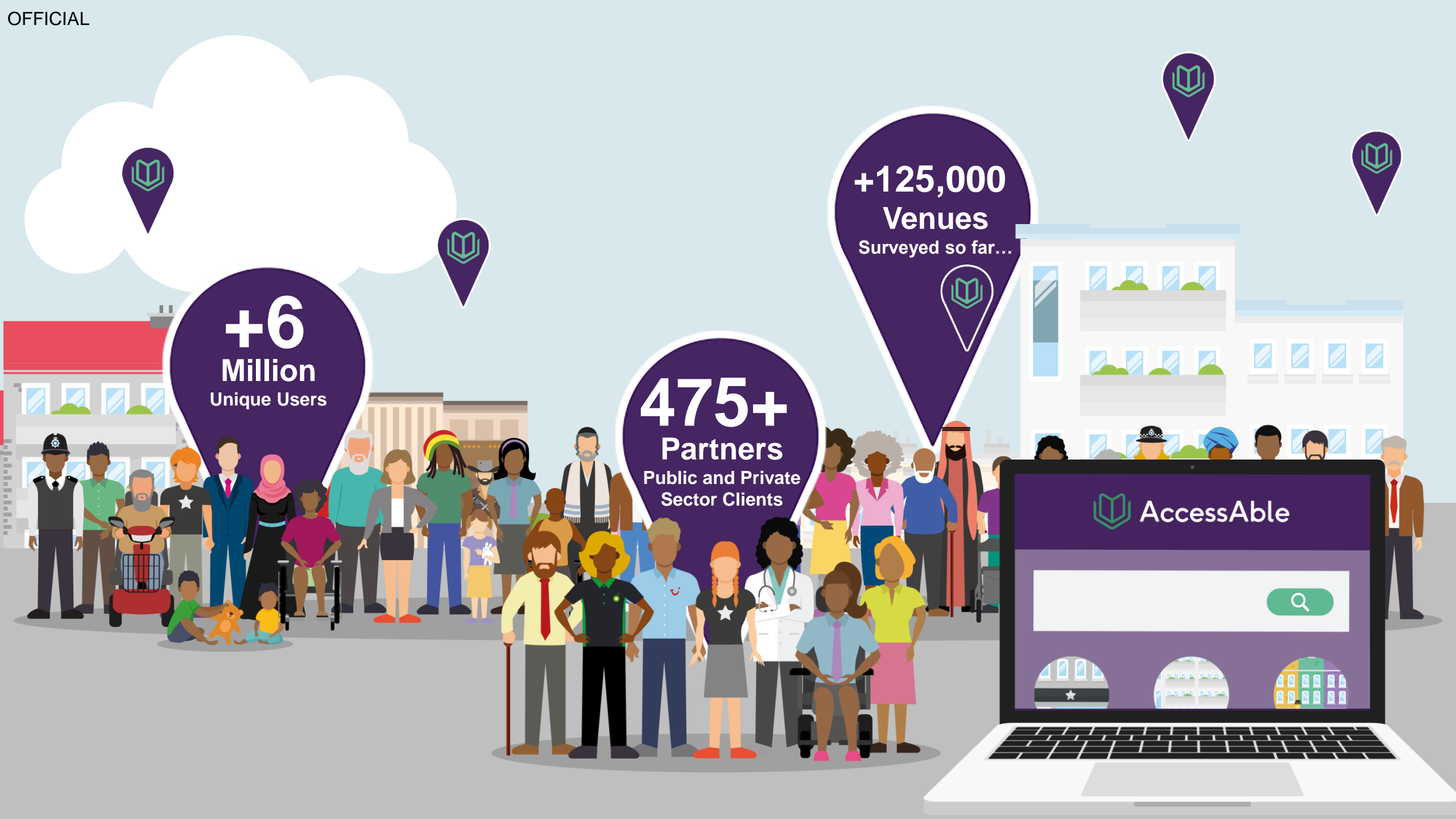
**March
2002**

+6
Million
Unique Users

475+
Partners
Public and Private
Sector Clients

+125,000
Venues
Surveyed so far...

 **AccessAble**



AccessAble's Detailed Access Guides



Detailed

1000+ pieces
of information
per venue



Factual

Objective information;
facts, measurements
and photographs



User Driven

100+ engagement
events p.a.
Pan-Disability

AccessAble's Detailed Access Guides



Surveyor Assessed

Experienced surveyors,
unique technology, in
depth assessment



Consistent

Standardised
information
across the UK



Quality Assured

Accredited
processes ISO 9001
up to date / accurate



Our work with Plymouth City Council

- Began working with the Council in 2008.
- Detailed Access Guides available to 230 venues.
- Annual review where all venues are contacted and 10% resurveyed.
- On-going engagement opportunities.
- Can be integrated into directories and websites about the city.



Search for accessible places to go

I'm looking for...

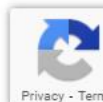
Try searching for restaurants, hotels, hospitals, universities

Near to...

Place, town or postcode

Search

Search for cinemas, shops, pubs, theatres, colleges, etc. Add a town, postcode or location to scope your search.



Search for accessible places to go

I'm looking for...

Try searching for restaurants, hotels, hospitals, universities

Near to...

Place, town or postcode

[Search](#)

Search for cinemas, shops, pubs, theatres, colleges, etc. Add a town, postcode or location to scope your search.



Search for accessible places to go

I'm looking for...

Plymouth

University of Plymouth

Plymouth University

Plymouth Citizens Advice Bureau - Advice Plymouth

Plymouth Argyle

Plymouth Market

Plymouth Hoe

Travelodge (Plymouth)

Near to...

Place, town or postcode

Search

or location to scope your search.

you the accessibility information you need to work out if a place is



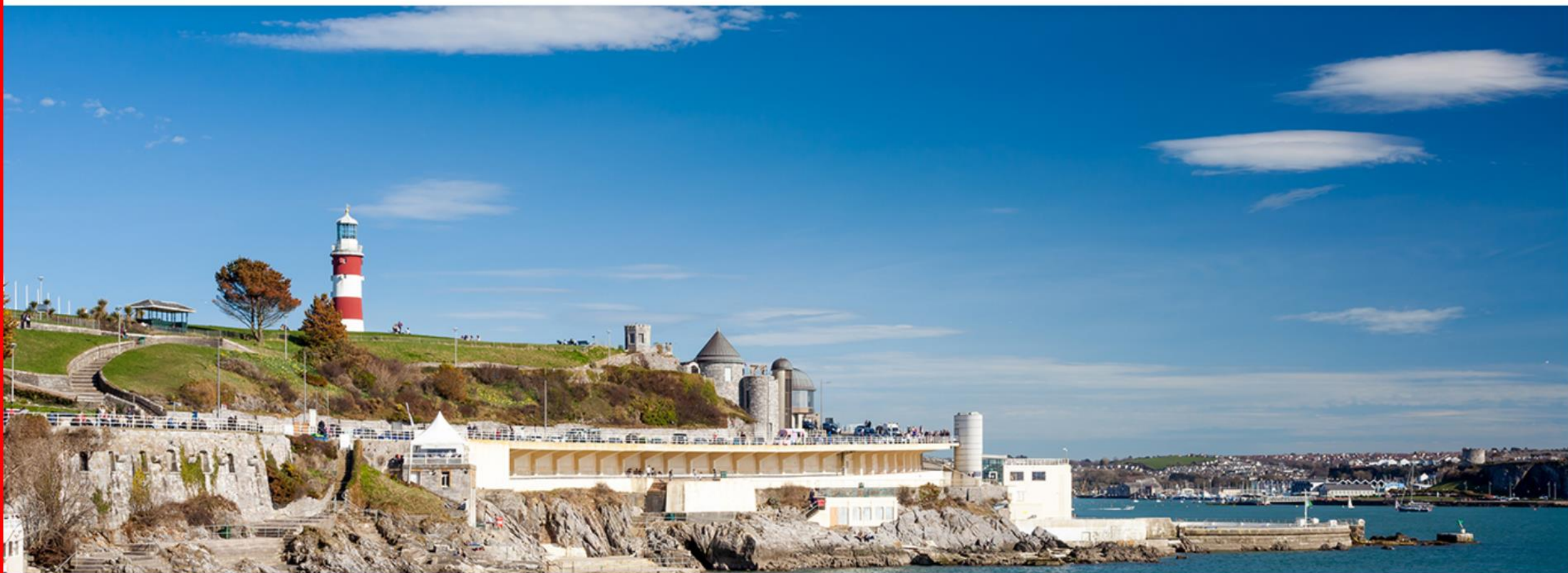
I'm looking for...

Try searching for restaurants, hotels, hospitals, universities

Near to...

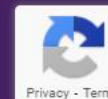
Place, town or postcode

Search



Plymouth

This Access Guide has been made possible thanks to:





Plymouth has a rich maritime heritage and is the regional capital for culture – Britain’s Ocean City. The coastline is dotted with stunning beaches and romantic hidden coves, perfect for exploring. The Waterfront attractions offer something for everyone, accessed by road or boat. Just on the edge of Plymouth is one of Britain’s largest national parks – Dartmoor. The city centre has great shopping and many dining options. All-weather attractions at the Barbican and Sutton Harbour mean Plymouth is a year-round destination.

 [Visit website](#)

Search for Access Guides and Routes within Plymouth

[Search](#)

Featured Access Guides

[View all Access Guides](#)

Access Guides



[Plymouth Gin Distillery](#)

60 Southside Street, Plymouth,
Devon, PL1 2LQ



[Plymouth Hoe](#)

The Hoe, Hoe Road, Plymouth,
Devon, PL1 2PA



[Theatre Royal Plymouth](#)

Royal Parade, Plymouth, Devon,
PL1 2TR



Plymouth Access Guides

Accessibility Symbols
0 selections



Filter by Venue types
0 selections



You searched for: garden centre
[Back to Plymouth](#)



Bens Farm Shop

Yealmpton, Devon, PL8 2LT

[View Accessibility Symbols](#)

[Guide](#)



Homebase

Unit 6 Marsh Mills Retail Park, Plymouth, Devon, PL6 8LX

[View Accessibility Symbols](#)

[Guide](#)

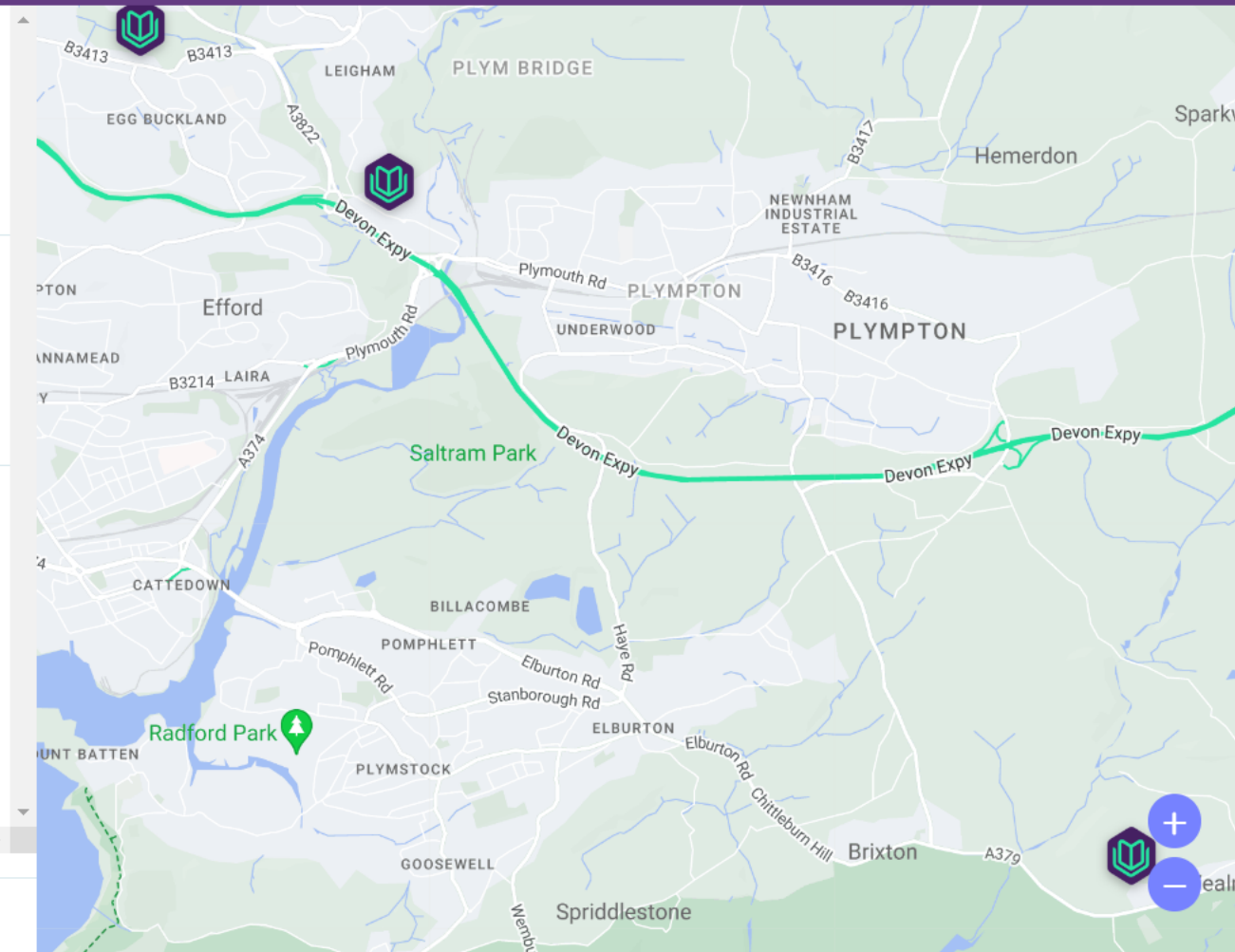


Plymouth Garden Centre

Fort Austin Avenue, Crownhill, Plymouth, PL6 5NU

[View Accessibility Symbols](#)

[Guide](#)





I'm looking for...

Try searching for restaurants, hotels, hospitals, universities

Near to...

Place, town or postcode

[Search](#)

Plymouth Garden Centre

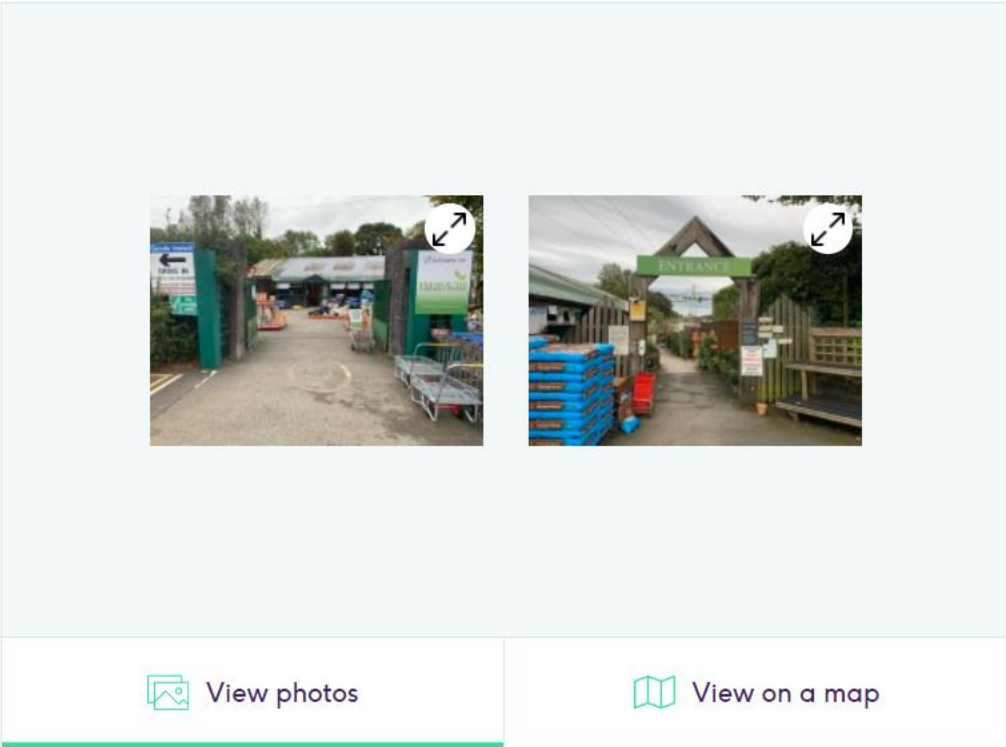
Fort Austin Avenue, Crownhill, Plymouth, PL6 5NU

01752 771 820

[Send email](#)

[Visit website](#)

[View Accessibility Symbols](#)



[View photos](#)

[View on a map](#)



I'm looking for...

Try searching for restaurants, h

Accessibility Symbols



Ramped/Sloped Access, and/or Manual Doors



Mobility Impaired Walker



On-Site Parking



Blue Badge/Accessible Parking Bays



Step Free Standard Toilet



Baby Changing Facility



Seat(s) Available

For more information about what these symbols mean, view our [Accessibility Symbols Guide](#).

[Close this popup window.](#)

Plymouth

Fort Austin Avenue, C

01752 771 820

Send email

Visit website

[View Accessibility Symbols](#)



View photos



View on a map



Location >

Opening Hours >

Parking

Outside Access (Main Entrance) >

Reception (Help & Information) >

Inside Access >

Level Change (Inside) >

Outside Access (Café Entrance) >

Restaurant Bar Internal >

Level Change (Café) >

Inside Access (Outdoor Plant Area) >

Photos



Parking

- The venue does have its own car park.

[Collapse all](#) [Expand all](#)

Venue Car Park

View

- Parking is free for all users.
- The car park is located at the front of the venue, on the left and right hand side of the main entrance.
- The car park type is open air/surface.
- There is/are 5 Blue Badge parking bay(s) within the car park.
- The dimensions of the Blue Badge parking bay(s) are 350cm x 480cm (11ft 6in x 15ft 9in).

Something changed?



Location



Opening Hours



Parking



Outside Access (Main Entrance)



Reception (Help & Information)



Inside Access



Level Change (Inside)



Outside Access (Café Entrance)



Restaurant Bar Internal



Level Change (Café)



Inside Access (Outdoor Plant Area)



[Collapse all](#)

[Expand all](#)

Venue Car Park

View

- Parking is free for all users.
- The car park is located at the front of the venue, on the left and right hand side of the main entrance.
- The car park type is open air/surface.
- There is/are 5 Blue Badge parking bay(s) within the car park.
- The dimensions of the Blue Badge parking bay(s) are 350cm x 480cm (11ft 6in x 15ft 9in).
- The nearest Blue Badge bay is 5m (5yd 1ft) from the main entrance.
- The furthest Blue Badge bay is 15m (16yd 1ft) from the main entrance.
- The route from the car park to the entrance is accessible to a wheelchair user with assistance.
- Assistance may be required because there is/are uneven surfaces.
- The car park surface is tarmac.
- There is not a road to cross between the car park and the entrance.
- The car park does not have a height restriction barrier.

Drop-off Point

View

Something changed?





Location >

Opening Hours >

Parking >

Outside Access (Main Entrance)

Reception (Help & Information) >

Inside Access >

Level Change (Inside) >

Outside Access (Café Entrance) >

Restaurant Bar Internal >

Level Change (Café) >

Inside Access (Outdoor Plant Area) >

Photos



Outside Access (Main Entrance)

[Collapse all](#) [Expand all](#)

Entrance

View

- This information is for the entrance located at the front of the venue.
- There is step-free access at this entrance.
- There are no doors at this entrance.
- The width of the door opening is 270cm.

Something changed?



Location >

Opening Hours >

Parking >

Outside Access (Main Entrance) >

Reception (Help & Information)

Inside Access >

Level Change (Inside) >

Outside Access (Café Entrance) >

Restaurant Bar Internal >

Level Change (Café) >

Inside Access (Outdoor Plant Area) >

Photos



Reception (Help & Information)

- The desk/counter is 15m (16yd 1ft) from the main entrance.
- There is level access to the desk/counter from the entrance.
- The desk/counter is medium height (77cm - 109cm).
- The desk/counter does not have a low (76cm or lower) section.
- The lighting levels are moderate to good.
- There is not a hearing assistance system.

Something changed?





Location >

Opening Hours >

Parking >

Outside Access (Main Entrance) >

Reception (Help & Information) >

Inside Access

Level Change (Inside) >

Outside Access (Café Entrance) >

Restaurant Bar Internal >

Level Change (Café) >

Inside Access (Outdoor Plant Area) >

Photos



Inside Access

- There is not level access to the service(s).
- There is not a hearing assistance system.
- This venue does play background music.
- Motorised scooters are allowed in public parts of the venue.
- The lighting levels are moderate to good.

Something changed?





Location >

Opening Hours >

Parking >

Outside Access (Main Entrance) >

Reception (Help & Information) >

Inside Access >

Level Change (Inside) >

Outside Access (Café Entrance) >

Restaurant Bar Internal >

Level Change (Café) >

Inside Access (Outdoor Plant Area) >

Photos



Outside Access (Café Entrance)

[Collapse all](#) [Expand all](#)

Entrance

View

- This information is for the entrance located at the rear of the outside garden area.
- There is stepped access at this entrance.
- The main door(s) open(s) away from you (push).
- The door(s) is/are permanently held open.
- The door(s) is/are double width.
- The width of the door opening is 165cm.

Something changed?





Location >

Opening Hours >

Parking >

Outside Access (Main Entrance) >

Reception (Help & Information) >

Inside Access >

Level Change (Inside) >

Outside Access (Café Entrance) >

Restaurant Bar Internal

Level Change (Café) >

Inside Access (Outdoor Plant Area) >

Photos



Restaurant Bar Internal

- The following information is for the café.
- Once inside, there is not level access to the service.
- Full table service is not available.
- Food or drinks are ordered from the counter.
- Food or drinks can be brought to the table.
- There is not a lowered section at the service counter.
- There is ample room for a wheelchair user to manoeuvre.
- No tables are permanently fixed.
- No chairs are permanently fixed.
- No chairs have armrests.

Something changed?





Inside Access >

Level Change (Inside) >

Outside Access (Café Entrance) >

Restaurant Bar Internal >

Level Change (Café) >

Inside Access (Outdoor Plant Area) >

Outside Access (Houseplants Shop) >

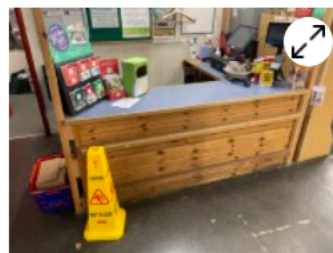
Counter (Checkouts)

Standard Toilet(s) >

Accessible Toilet (Right Hand Transfer) >

Level Change (Toilets) >

Photos



Counter (Checkouts)

- The counter is 20m (21yd 2ft) from the ground floor accessible entrance.
- There is level access to the counter from the entrance.
- There is not a bell to attract attention.
- There is sufficient space to write or sign documents on the counter.
- The height of the counter is 83cm (2ft 9in).
- There is not a lowered section.
- There is not a hearing assistance system.
- Lighting levels are moderate to good.

Something changed?



- Inside Access >
- Level Change (Inside) >
- Outside Access (Café Entrance) >
- Restaurant Bar Internal >
- Level Change (Café) >
- Inside Access (Outdoor Plant Area) >
- Outside Access (Houseplants Shop) >
- Counter (Checkouts) >
- Standard Toilet(s) >
- Accessible Toilet (Right Hand Transfer)**
- Level Change (Toilets) >

Photos



Accessible Toilet (Right Hand Transfer)

- Accessible toilet facilities are available.

[Collapse all](#) [Expand all](#)

Location and Access	View
Features and Dimensions	View
Position of Fixtures	View
Colour Contrast and Lighting	View
Baby Change Facilities	View

Something changed?



Inside Access



Level Change (Inside)



Outside Access (Café Entrance)



Restaurant Bar Internal



Level Change (Café)



Inside Access (Outdoor Plant Area)



Outside Access (Houseplants Shop)



Counter (Checkouts)



Standard Toilet(s)



Accessible Toilet (Right Hand Transfer)



Level Change (Toilets)



Location and Access

View

- There is pictorial signage on or near the toilet door.
- This accessible toilet is approximately 80m (87yd 1ft) from the main entrance.
- This accessible toilet is located within a toilet block to the rear of the outdoor plant area.
- There is not level access to this accessible toilet.

Features and Dimensions

View

- This is a shared toilet.
- A key is not required for the accessible toilet.
- The door opens outwards.
- The door is locked by a twist lock.
- The width of the accessible toilet door is 80cm (2ft 7in).
- The door is easy to open.
- The dimensions of the accessible toilet are 150cm x 233cm (4ft 11in x 7ft 8in).
- There is sufficient turning space in the cubicle for a wheelchair user.
- There is not a lateral transfer space.

Something changed?



Inside Access >

Level Change (Inside) >

Outside Access (Café Entrance) >

Restaurant Bar Internal >

Level Change (Café) >

Inside Access (Outdoor Plant Area) >

Outside Access (Houseplants Shop) >

Counter (Checkouts) >

Standard Toilet(s) >

Accessible Toilet (Right Hand Transfer) >

Level Change (Toilets) >

Position of Fixtures

View ▾

- Wall mounted grab rails are available for the toilet.
- As you face the toilet the wall-mounted grab rails are on the left.
- There is not a shelf within the accessible toilet.
- There is not a mirror.
- The height of the toilet seat above floor level is 41cm (1ft 4in).
- There is a hand dryer.
- The hand dryer cannot be reached from seated on the toilet.
- The hand dryer is placed higher than 100cm (3ft 3in).
- The height of the hand dryer is 113cm (3ft 8in).
- There is not a towel dispenser.
- There is a toilet roll holder.
- The toilet roll holder can be reached from seated on the toilet.
- The toilet roll holder is not placed higher than 100cm (3ft 3in).
- There is a wash basin.
- The wash basin cannot be reached from seated on the toilet.
- The wash basin is placed higher than 74cm (2ft 5in).
- The height of the wash basin is 82cm (2ft 8in).

Something changed?

[Inside Access](#)[Level Change \(Inside\)](#)[Outside Access \(Café Entrance\)](#)[Restaurant Bar Internal](#)[Level Change \(Café\)](#)[Inside Access \(Outdoor Plant Area\)](#)[Outside Access \(Houseplants Shop\)](#)[Counter \(Checkouts\)](#)[Standard Toilet\(s\)](#)[Accessible Toilet \(Right Hand Transfer\)](#)[Level Change \(Toilets\)](#)

Colour Contrast and Lighting

[View](#)

- The contrast between the external door and wall is good.
- There is a high colour contrast between the internal door and wall.
- The contrast between the wall-mounted grab rail(s) and wall is poor.
- There is a poor colour contrast between the dropdown rail(s) and wall.
- The contrast between the walls and floor is good.
- The lighting levels are moderate to good.

Baby Change Facilities

[View](#)

- Baby change facilities are located within the venue.
- Baby change facilities are located within the accessible toilet.
- The height of the baby change table once extended is 79cm (2ft 7in).

[Something changed?](#)

Print/Save as PDF
 Something changed?
 Search Access Guide
 Enter your search term...

- Reception (Help & Information) >
- Inside Access >
- Outside Access (Café Entrance) >
- Level Change (Café) >
- Inside Access (Outdoor Plant Area) >
- Outside Access (Houseplants Shop) >
- Counter (Checkouts) >
- Standard Toilet(s) >
- Accessible Toilet (Right Hand Transfer) >
- Level Change (Toilets) >
- Additional Info >

Photos



Accessible Toilet (Right Hand Transfer)

- Accessible toilet facilities are available.

[Collapse all](#) [Expand all](#)

Location and Access

View

- This accessible toilet is located within a toilet block to the rear of the outdoor plant area.

Features and Dimensions

View

- A key is not required for the accessible toilet.



Inside Access >

Level Change (Inside) >

Outside Access (Café Entrance) 5 >

Restaurant Bar Internal >

Level Change (Café) >

Inside Access (Outdoor Plant Area) 2 >

Outside Access (Houseplants Shop) 6 >

Counter (Checkouts) >

Standard Toilet(s) 1 >

Accessible Toilet (Right Hand Transfer) 8

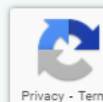
Level Change (Toilets) >

Features and Dimensions

View ▾

- This is a shared toilet.
- A key is not required for the accessible toilet.
- The door opens outwards.
- The door is locked by a twist lock.
- The width of the accessible toilet door is 80cm (2ft 7in).
- The door is easy to open.
- The dimensions of the accessible toilet are 150cm x 233cm (4ft 11in x 7ft 8in).
- There is sufficient turning space in the cubicle for a wheelchair user.
- There is not a lateral transfer space.
- The tap type is twist/turn.
- There is not a mixer tap.
- There is an emergency alarm.
- The emergency pull cord alarm is not fully functional.
- The alarm was out of reach (higher than 10cm (4") from floor) when surveyed.
- Disposal facilities are available in the cubicle.
- There is a/are sanitary disposal units.
- There is not a/are not coat hook(s).

Something changed?





Inside Access >

Level Change (Inside) >

Outside Access (Café Entrance) 5 >

Restaurant Bar Internal >

Level Change (Café) >

Inside Access (Outdoor Plant Area) 2 >

Outside Access (Houseplants Shop) 6 >

Counter (Checkouts) >

Standard Toilet(s) 1 >

Accessible Toilet (Right Hand Transfer) 8

Level Change (Toilets) >

Features and Dimensions

View ▾

- This is a shared toilet.
- A key is not required for the accessible toilet.
- The door opens outwards.
- The door is locked by a twist lock.
- The width of the accessible toilet door is 80cm (2ft 7in).
- The door is easy to open.
- The dimensions of the accessible toilet are 150cm x 233cm (4ft 11in x 7ft 8in).
- There is sufficient turning space in the cubicle for a wheelchair user.
- There is not a lateral transfer space.
- The tap type is twist/turn.
- There is not a mixer tap.
- There is an emergency alarm.
- The emergency pull cord alarm is not fully functional.
- The alarm was out of reach (higher than 10cm (4") from floor) when surveyed.
- Disposal facilities are available in the cubicle.
- There is a/are sanitary disposal units.
- There is not a/are not coat hook(s).



Location >

Opening Hours >

Parking

Outside Access (Main Entrance) >

Reception (Help & Information) >

Inside Access >

Level Change (Inside) >

Outside Access (Café Entrance) >

Restaurant Bar Internal >

Level Change (Café) >

Inside Access (Outdoor Plant Area) >

Photos



Parking

- The venue does have its own car park.

[Collapse all](#) [Expand all](#)

Venue Car Park

View

- Parking is free for all users.
- The car park is located at the front of the venue, on the left and right hand side of the main entrance.
- The car park type is open air/surface.
- There is/are 5 Blue Badge parking bay(s) within the car park.
- The dimensions of the Blue Badge parking bay(s) are 350cm x 480cm (11ft 6in x 15ft 9in).

Something changed?



A





Contact

Dan Hodgson-Scribbins

Senior Partnerships Manager

E: dan.hodgson-scribbins@accessable.co.uk

T: 01438 842710